



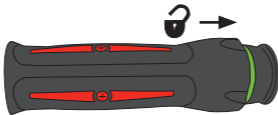
Norbar[®]

Norbar Torque Tools

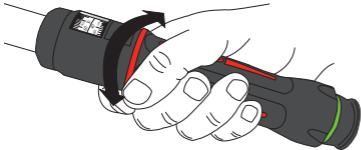
Professional Wrench

Models 15 to 400

- Unlock
- Déverrouiller la molette
- Entsichern
- Sbloccare
- Desbloquear



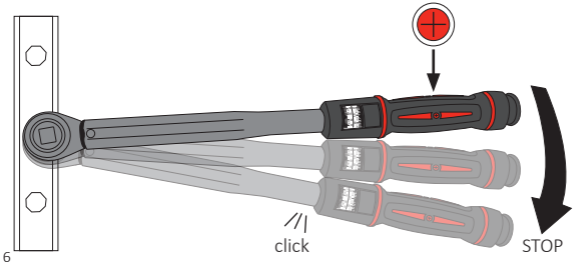
- Lock
- Verrouiller la molette
- Sichern
- Bloccare
- Bloquear



- Turn handle to adjust
- Tourner la poignée pour régler le couple
- Zur Drehmomenteinstellung bitte Handgriff drehen
- Ruotare l'impugnatura per la regolazione
- Gire el mango para ajustar



- Never adjust beyond the marked scale
- Ne jamais régler en-dehors de la zone de l'échelle
- Niemals über den markierten Skalenbereich hinaus einstellen
- Mai regolare la chiave oltre il marchio sulla scala
- No ajustar por debajo de la zona marcada en la escala



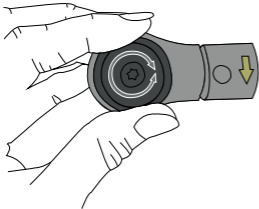
6

click

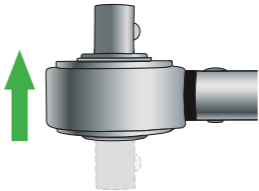
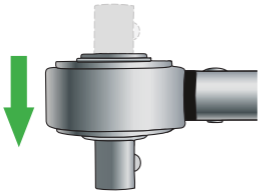
STOP

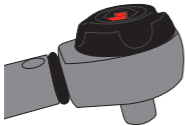
- Pull smoothly from the marked 'Load Point' in direction indicated by arrow
- Appliquer un effort doucement, au niveau du repère de « point de charge » dans la direction indiquée par la flèche
- Den Drehmomentschlüssel an dem gekennzeichneten Kraft-Angriffspunkt anfassen und behutsam in Pfeilrichtung das Drehmoment aufbauen
- Tirare con cura dal “punto di carico” marcato nella direzione indicata dalla freccia
- Tire suavemente en la dirección indicada por la flecha sujetando el mango por el “punto de carga”

- Ratchet Types



- Set ratchet direction
- Régler la direction de serrage
- Wahl der Arbeitsrichtung
- Fissare direzione cricchetto
- Seleccionar

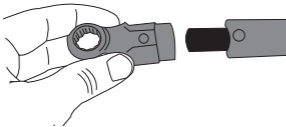




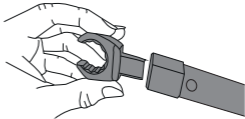
180°



- Spigot End



- Female Torque Handle





View our How to Use Video at
www.norbar.com/HowtoUseATorqueWrench

www.norbar.com

Norbar Torque Tools Ltd
Wildmere Road, Banbury, OX16 3JU

Part No. 34412 Issue 5
© Norbar Torque Tools Ltd 2024